

Lions Hand Eagles First Loss

Sports

THE SACRAMENTO BEE, SATURDAY, OCTOBER 29, 1960 Page B1

Bicaneers Win 20-13, Lead Metro

By Larry Lavelle

El Camino never again will invite Tommy Relles to their homecoming.

The slippery junior half-back from the C. K. McClatchy High School made himself mighty unpopular in some quarters last night. He, in fact, ruined the whole show for Eagle fans by leading Superior California's No. 2 ranked prep grid team to a 20 to 13 win.

A record crowd of 6,000—including many who spilled out of temporary bleachers—watched the meeting of the

Metropolitan League titans. And they were rewarded by two willing teams who gave all and asked no quarter.

The loss was the first of the season for the Eagles, and the victory leaves Coach George Bican's Lions alone atop the Metro ladder.

Big Factor

Relles might be running for some office at the Freeport Boulevard school. At least El Camino defenders thought he was running somewhere in a hurry.

It was the running of Relles—he amassed 159 of the Lions' 251 yards via land—and a BIG second half defense which spelled win.

The Bicaneers rolled 57 yards in 11 plays to open the fourth quarter and break a 13 all tie which had existed since intermission. And Relles carried eight times in the drive, taking it three yards for the touchdown with eight minutes left.

Once Relles was stopped for a three yard loss—but it was by the face mask and that cost the Eagles 15 yards they could not afford to surrender.

Rally Fails

El Camino tried to rally after the TD, but after picking up a first down at the Lions' 45, quarterback Gary Shupe threw incomplete, and then Gene Stucky picked his six point bid.

Jim Ashcraft.

It was a glove which glove whic ple of ea Shupe night

Continued from page B1

passes for 134 yards and both Eagle touchdowns.

The Lions scored first, surviving a fumble on their opening series, then marching 85 yards in nine plays to a 6 to 0 lead. Relles ripped off a 50 yard burst to the El Camino 10, and in three plays the Bicaneers had it. Don Cobleigh went across on a one yard sneak, and Relles circled end on a pitchout for the extra point.

Eagles Drive

El Camino bounced right back, going 65 yards in seven cracks. Four rushing plays took the Eagles to their 47, then Shupe went to work. Three passes put them over, a five yarder to Bob Montgomery, a 30 yarder to Gary Kagel and finally one for 18 to Keith Fife who took it away from Relles and Jim Doolittle.

Ashcraft's kick made it 7 to 7.

On their very next drive the Eagles scored again, going 63 yards in nine plays. Shupe passes to Ashcraft and Montgomery were the big gainers, and the TD was a 13 yard aerial—Shupe to Ashcraft.

The Lions, with twin foes in the Eagles and the clock, knotted the score 1:08 before halftime. It was an eight play, 55 yard comeback.

Relles scored after taking a screen pass from Cobleigh and running it 30 yards to the tying TD. It was an amazing run, with Relles gunning

and coasting, slipping and sliding through the Eagles.

Lions Roll

The Lions, after breaking the tie, had the ball in the final minutes and rolled from their own nine to the Eagles' 14 before surrendering possession at the 15. Relles, John Blair and Stucky took turns in running the ball.

The game was featured by some particularly fine end play by the Lions' Steve Radich and Rich Pesavento and the Eagles' Gary Kagel.

El Camino won the sophomore game 19 to 0.

C. K. McClatchy HS.	7	6	0	7-20
El Camino	0	13	0	0-13

Individual scoring:
C. K. McClatchy—Cobleigh, 1 yard sneak (Relles, run); Relles, 30 yard pass from Cobleigh (run failed); Relles, 3 yard run (Relles, run).
El Camino—Fife, 18 yard pass from Shupe (Ashcraft, kick); Ashcraft, 13 yard pass from Shupe (kick blocked).

TEAM STATISTICS

	McCLATCHY	EL CAMINO
13	First downs rushing	5
3	First downs passing	5
2	First downs penalties	1
18	Total first downs	11
251	Net yards rushing	75
42	Net yards passing	134
293	Total net yardage	209
1	Lost ball on fumbles	0
25	Yards penalized	81

INDIVIDUAL STATISTICS

Rushing

	McCLATCHY	tcb	yg	yl	net	ave
Relles	28	170	11	159	5.7	
Cobleigh	4	9	0	9	2.3	
Blair	15	41	2	39	2.6	
Stucky	4	44	0	44	11.0	

EL CAMINO

Ashcraft	2	16	0	16	8.0	
McFadden	5	16	0	16	3.2	
Fife	8	30	1	29	3.6	
Wheatlev	6	12	5	7	1.2	
Shupe	2	17	0	17	8.5	
Slark	1	0	10	-10	-10.0	

Passing

	pa	pc	hi	net	td
Cobleigh, McC	5	4	0	42	1
Relles, McC	2	0	0	0	0
Shupe, EC	16	9	2	134	2

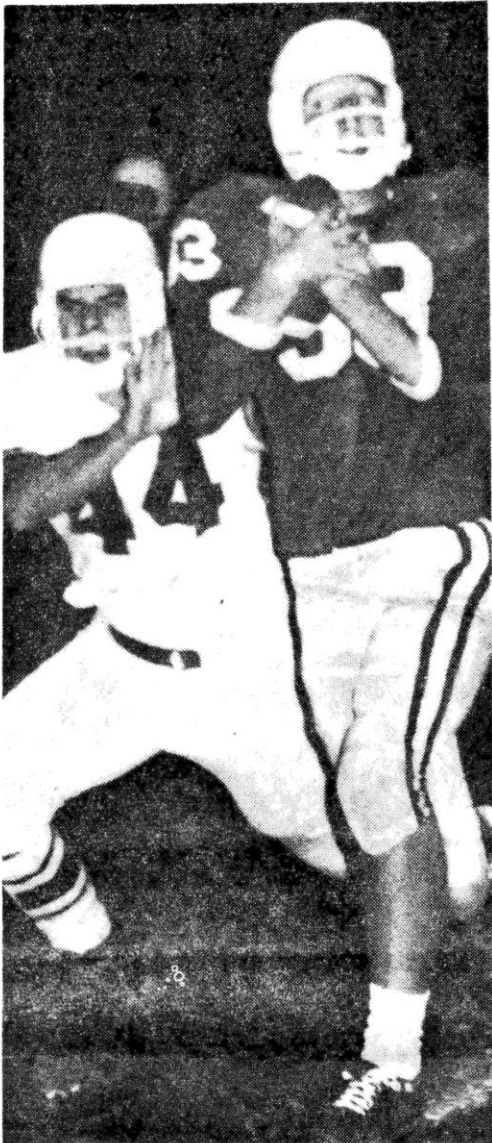
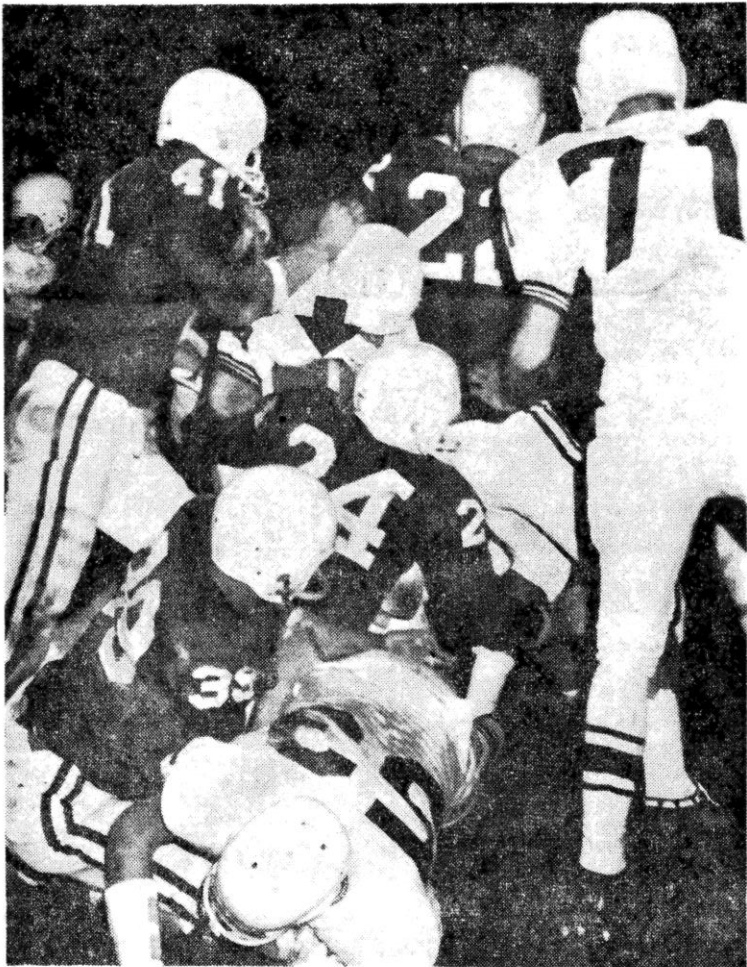
Pass Receptions

	pc	net	td
Relles, McC	2	47	1
Blair, McC	1	2	0
Stucky, McC	1	7	0
Wheatlev, EC	1	10	0
Montgomery, EC	2	20	0
Kagel, EC	2	48	1
Ashcraft, EC	3	38	1
Fife, EC	1	18	0

Punting

	punts	yds	blk	ave.
Hall, McC	2	85	0	42.5
Shupe, EC	3	98	0	32.7

Lions Hand Eagles First Loss, Grab Met Loop Lead



Keith Fife, No. 33 of El Camino goes into the end Zone after taking a pass from Gary Shupe for the first Eagles touchdown. The C. K. McClatchy High School defender is halfback Tom Relles. The later failed To get Fife in time but he Was outstanding in the Lions Triumph.

Bee photo by Bill Piggott

Halfback Tom Relles of the C. K. McClatchy High School Lions—carrying the football, shown by arrow—is met with plenty of resistance on this smash at the El Camino line. El Camino players are Gary Kagel, No. 41; Ernie Peters, No. 24; John Sabo, No. 22, and John Lundblad, No. 39. On the ground is Bob Milenz, No. 53, of the Lions. No. 71 is Joe Hall. Bee Photo by Bill Piggott